

# **Sustainability and efficiency waste projects in the North East**

**APSE Advisory Group meeting –  
3<sup>rd</sup> March 2010**

Peter Schofield – NE IEP Programme  
Manager

# Outline

- **NEIEP Background**
- **RIEP Programme Overview**
- **Waste and Environment Programme projects**

# Background to the NE IEP



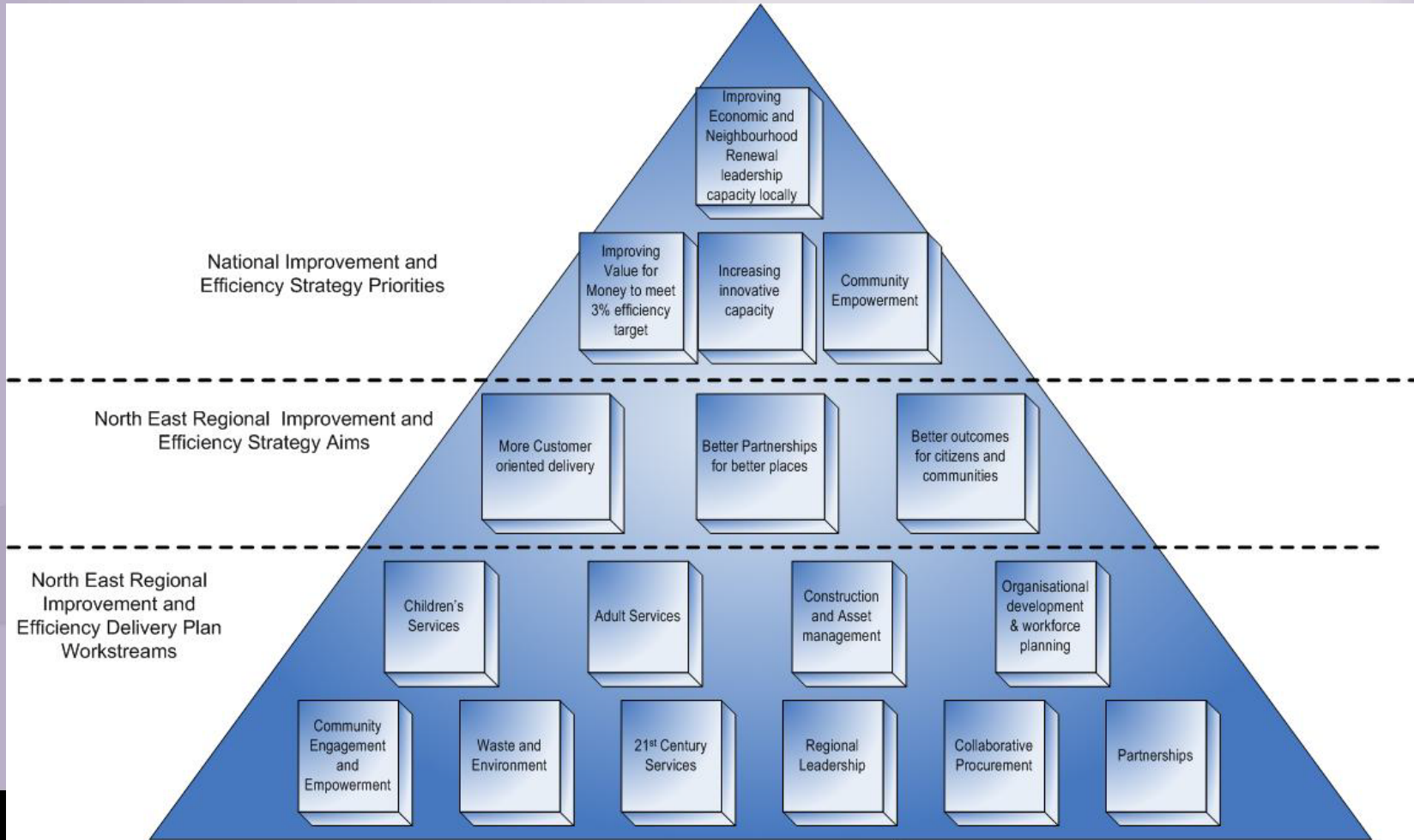
- **Support programme to help LAs and FRSs to meet the targets in CSR07 and the National “IES”**
- **Merger of ‘improvement’ (Improvement Partnership), ‘efficiency’ (North East Centre of Excellence) and ‘transformation’ (North East Connects)**
- **Governance – IESG, Programme Boards, Project Boards**
- **£16.8M funding for 2008-11**

# Partnership “Governance”



- **Improvement and Efficiency Steering Group**
- **Interdependencies between programmes mapped and addressed through IESG**
- **10 Programme Boards with Chief Executive level sponsor**
- **5 Programme Managers for 10 programmes**
- **Performance Management Framework**

# Strategic Context



# Programmes

- **Children's Services**
- **Adult Services**
- **Construction & Asset Management**
- **Collaborative Procurement**
- **Waste and Environment**
- **Organisational Development & Workforce Planning**
- **Partnerships**
- **Community Engagement & Empowerment**
- **21st Century Services**
- **Regional Leadership**

# Waste and Environment Programme Summary



- Delivering significant cashable efficiencies and ensuring that environmental impact from Waste Management is minimised
- To reduce the amount of waste being generated and diverted to landfill, increasing levels of recycling and re-use and making a positive contribution to improved carbon management

## Evidence base

- National and regional spend analysis highlights waste management as one of the highest spending areas. It is also an area which is under increasing pressure for environmental reasons with several challenging targets in relation to increased recycling and minimisation of waste

# Summary of Projects



- WE075 Involvement in or learning from other initiatives
- WE076 Benchmarking
- WE077 Co-ordinate Joint Waste Management Strategies
- WE078 Develop a sub regional and regional communications strategy
- WE079 Create links between construction projects and waste
- WE080 Enviro schools project
- WE081 Regional recyclate study
- WE082 Efficiency and Value for Money Projects
- WE083 Knowledge sharing and awareness changing activities
- WE084 Route Optimisation Project
- Climate Change Best Practice Programme



# WE075 Involvement in or learning from other initiatives

*(up to date information to inform decision making and service planning)*

- **Identify opportunities to attend and learn from other regional, national and “other regional” initiatives**
- **Regular updates on waste initiatives in other regions.**
- **Maintaining up to date knowledge of new solutions in an industry that is making increasing use of evolving technology and new ways of working.**
- **Share learning from events to inform efficiency gains and/or improvements in service delivery**

# **WE076 Benchmarking & Baselineing** *(Developing a knowledge base of current activity, policy and strategy)*

- **Contacts – strategic and operational level**
- **Tonnages**
- **Collection methods and frequencies**
- **Recycling rates**
- **Contract start and end dates**
- **Containers**
- **Disposal methods**
- **Use of technology**
- **Performance measures**

# WE 077 Co-ordinating Waste Management Strategies

north east  
**improvement**  
and **efficiency**  
partnership

The logo for the North East Improvement and Efficiency Partnership features a stylized purple arrow pointing upwards and to the right, positioned to the right of the text.

*Aligning sub-regional and regional activity*

- **Using the baseline data to identify opportunities for consistent approaches, “best practice” or joint working**
  - **Strategically**
  - **Operationally**
- **A regional Waste Management Strategy?**

# WE 078 Communications Strategy



- **Improve recycling and reduce waste by through behavioural change**
- **Three themes**
  - **Small WEEE**
  - **Reduction in Food Waste**
  - **Increased composting**
- **A best practice model for joined-up working between LAs and partners**
- **Integrated campaign using traditional and new media**

# WE 079 Links between Waste and Demolition

north east  
**improvement**  
and **efficiency**  
partnership

The logo for the North East Improvement and Efficiency Partnership, featuring a stylized purple arrow pointing upwards and to the right.

*Linkage with the construction programme*

- **Initiated once mapping of construction activity complete**
- **Opportunity provided through co-ordinated approach to construction activity (regional frameworks)**
- **Consistent application of site waste management plans**
- **Recovering materials from “brown field sites”**
- **Potential for third sector involvement**

# WE 080 Enviro Schools

*Behaviour change – pupils and families*

north east  
**improvement**  
and **efficiency**  
partnership



- **Building on Newcastle City Council initiative**
- **Promotion of the DCSF “S3 tool” in schools**
- **Develop awareness campaign for schools including sustainable procurement & reducing waste at source.**
- **Web based learning programmes with tailored local materials within schools and local areas**

# WE081 Regional Recyclate Processing Facility

*Feasibility Study*

north east  
**improvement**  
and **efficiency**  
partnership

The logo for the North East Improvement and Efficiency Partnership features the text 'north east' in a small, grey, sans-serif font at the top. Below it, the words 'improvement' and 'efficiency' are written in a larger, bold, dark purple font, with 'and' in a smaller, grey font between them. The word 'partnership' is written in a smaller, grey font at the bottom. To the right of the text is a large, dark purple arrow pointing upwards and to the right.

- **Impact of economic downturn on:**
  - **Market values for recyclable commodities**
  - **The region's recycling performance**
- **Create future resilience for recycling activity**
- **Build public confidence in recycling as a concept**
- **Employment opportunities**
- **Reduced Carbon Footprint**

# WE082 Efficiency and Value for Money & Innovation

*Taking things out of the “pending tray”*

north east  
**improvement**  
and **efficiency**  
partnership

The logo for the North East Improvement and Efficiency Partnership. It features the text 'north east' in a small, grey, sans-serif font at the top. Below it, the word 'improvement' is written in a large, bold, purple, sans-serif font. Underneath 'improvement', the word 'and' is written in a small, grey, sans-serif font, followed by the word 'efficiency' in a large, bold, purple, sans-serif font. At the bottom, the word 'partnership' is written in a small, grey, sans-serif font. To the right of the text is a large, dark purple, stylized arrow pointing upwards and to the right.

- **Dealing with gulley arisings**
- **“Smart bins”**
- **Feasibility of Community based AD plants**
- **Technology based solutions to improvement in service delivery**



# WE083 Knowledge Sharing and Awareness Raising

*Within the LA family*



- **Conferences**
- **Seminars**
- **Mentoring**
- **Job shadowing**
- **Links to WIN/IESE Waste network**

# WE085 Fleet KPIs

*identifying opportunities to maximise vehicle usage*

north east  
**improvement**  
and **efficiency**  
partnership



- **A tested set of generic fleet management KPI's**
- **A Proven Methodology and set of Data collection templates to support the wider rollout of the KPI's**
- **Recommendations on wider applicability and regional roll out opportunities**
- **Skills transfer to local fleet management teams**

# WE084 – Route Optimisation

*balancing workloads*

north east  
**improvement**  
and **efficiency**  
partnership

The logo for the North East Improvement and Efficiency Partnership features a stylized purple arrow pointing upwards and to the right, positioned to the right of the text.

- **Primary benefits**

- fuel savings (carbon reduction)
- Efficient use of fleet and resources
- Cross boundary working post LGR

- **Secondary benefits**

- Scenario planning
- Links to CRM systems for information gathering
- Improved responsiveness for services – eg bulky waste
- Extension to other cyclic transport based activity

# Climate Change Best Practice Programme

*(200k to save the planet)*



- **Carbon management planning**
- **Baselining – what works and what doesn’t**
  - “5 things to consider”
- **Regional best practice group – topic focused**
  - Skills and awareness training & capability development
  - Specifics – eg how to engage schools in energy efficiency, low carbon procurement
- **Innovation and technology transfer**
- **Capital Fund - £400k to build evidence base on the use of innovation**
  - LED lighting for museums and streets
  - Voltage optimisation

## Thank you – Any Questions?

Peter Schofield

Tel: 07801 600745

email: [peter.schofield@northeastcouncils.gov.uk](mailto:peter.schofield@northeastcouncils.gov.uk)

web: <http://www.northeastiep.gov.uk>